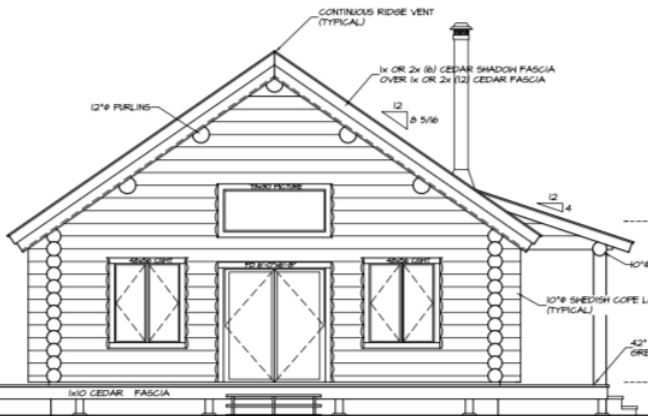




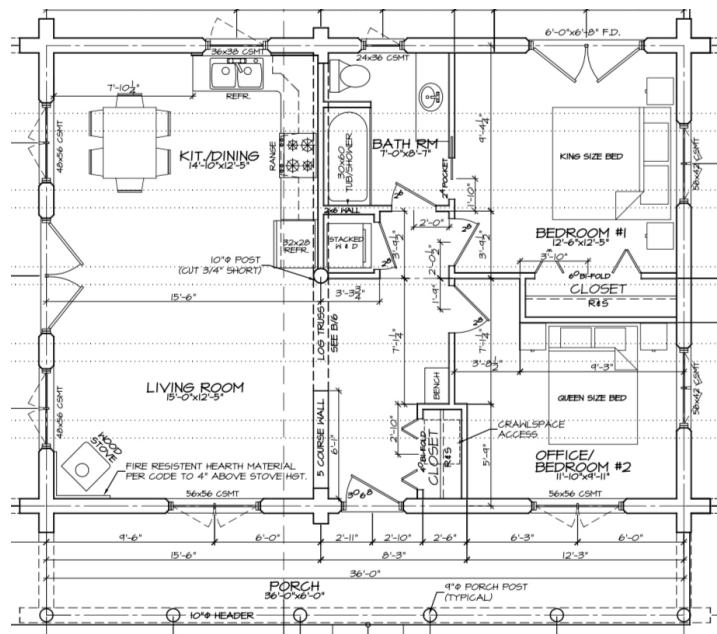
# “COST ANALYSIS”



**FRONT ELEVATION**  
SCALE = 1/4" = 1'-0"



**RIGHT SIDE ELEVATION**  
SCALE = 1/4" = 1'-0"



Design: Muskoka

For:

Location:



# 'HOUSE' SPECIFIC COSTS

---

## Design

---

- Muskoka model, 26' x 36' 936 sq.ft.

## Foundation – 27.5k

---

- Slab-on-grade c/w R20 styrofoam tray

## Weathertight Package- \$201,341

---

- Handcrafted round shell material package & INSTALLATION  
Note: includes log Walls, windows/doors, all framing, gable pine siding, steel roofing  
-includes porch roof but subfloor & deck are not included (to be concrete slab)

## Insulation – \$12 650

---

- Roof – R36 Rock wool, Gables – R22 Rock wool

## Plumbing – 9k

---

- ABS, Pex pipe & fittings to all fixtures
- 2 exterior hose taps, Valves on all accessible fixtures



---

## Electrical – 15k

---

- 200 amp underground service
- All wiring to plugs, switches & mechanicals. Fixtures installed
- 2 exterior plugs, Telephone & cable wiring

---

## HVAC – 20k

---

- Heating – radiant floor
- HRV – Venmar

## TOTAL 'HOUSE' SPECIFIC COSTS

**(not including interior finishes or stain) - \$285,491**

---

## INTERIOR FINISHINGS – 92.5k

---

- Drywall for all partitions, primed & painted (12.5k)
- Pine ceiling (12.5k)
- Concrete Floor Finish (7.5k)
- Kitchen & Vanities c/w laminate counters (17.5k)
- Pine interior doors, window / door trim, baseboards (17.5k)
- Plumbing / electrical fixtures (5k)
- Stain Log Walls (interior/exterior, doors, ceiling (20k)



---

# OTHERS

---

- Building Permits / development fees
- Well / septic
- Land Development including laneway, excavation, backfill, landscaping, etc..

